

ARM DATA

Quantity :

Arm Diameter (in inches) :

Arm lengths :

 Riser (A) :mm *

 Inboard arm (B) :mm *

 Outboard arm (C) :mm *

Vapour return line : Yes : diameter: No

Vacuum breaker : Yes No

Purge connections :

 Riser : Yes No

 Apex : Yes No

 Triple assembly : Yes No

Piping material : carbon steel low temp. carbon steel
 stainless steel 304L stainless steel 316L

Ladders and platforms : Yes No

Support jack : Yes No

Quick Connect/Disconnect Coupler (QC/DC):
 Yes No

QC/DC operation : Hydraulic Manual

Emergency Release System (ERS): Yes (*) No

*** If arm lengths are not known, please fill out page 2 of 3**
(*) if ERS should be included, electric hydraulic control system is mandatory

OPERATING CONDITIONS

Product(s):

Viscosity :

Density :

Capacity: Loading:m³/hr
Unloading:m³/hr

Temperature(°C): Operating: design: ambient:

Pressure (bar) Operating: design: test:

Flange type product : ANSI B16.5 150# 300# DIN.....

Flange type vapour : ANSI B16.5 150# 300# DIN.....

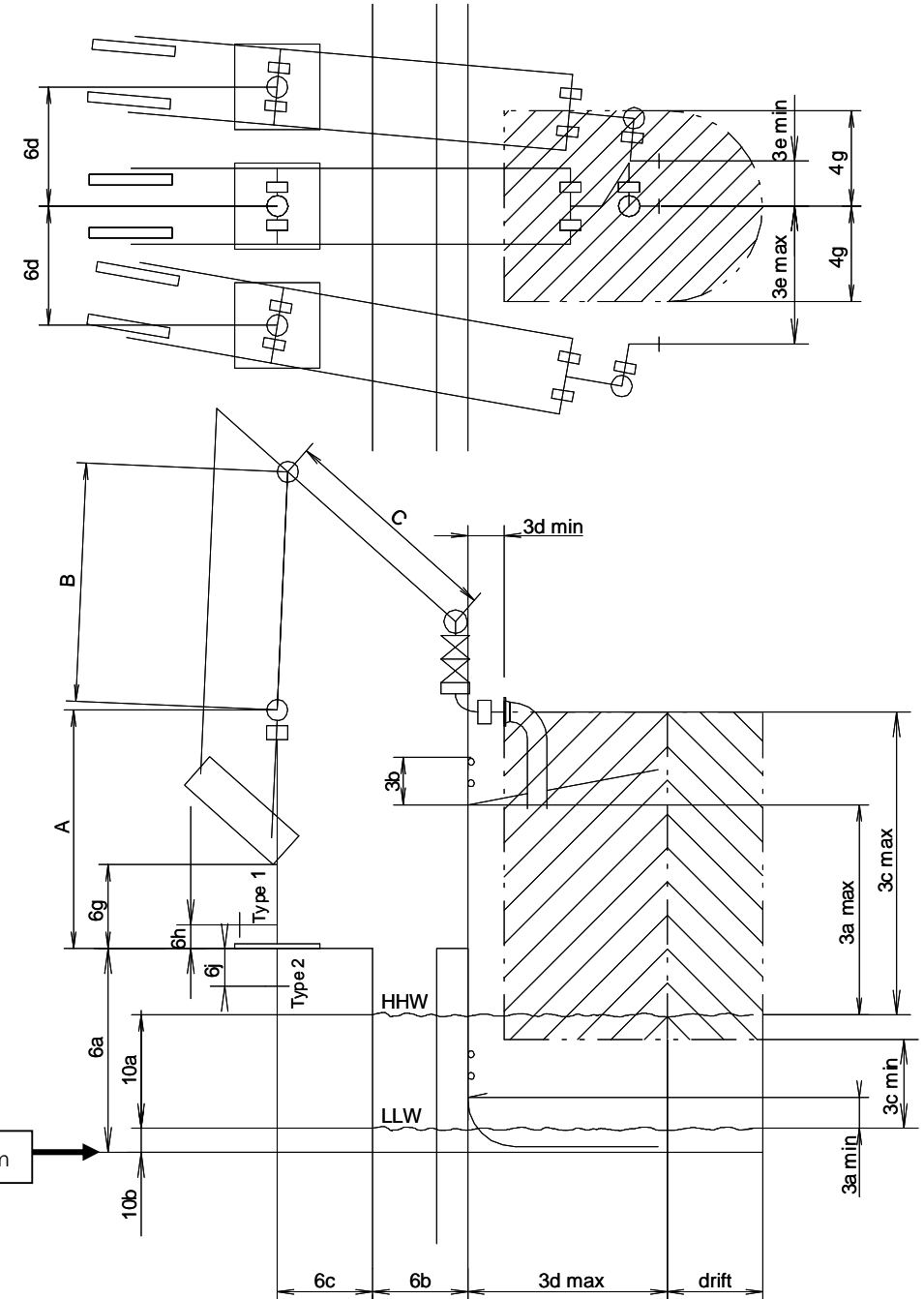
Max. wind velocity:

Operation: Manual Hydraulic: (please fill out page 3 of 3)

Any other special requirements:

| CODE | DESCRIPTION | DIMENSION | |
|-------------|---|-----------|----------|
| 3 a | FREEBOARD ABOVE WATER LINE | min. | mm |
| | | max. | mm |
| 3 b | RAIL HEIGHT | | mm |
| 3 c | MANIFOLD ABOVE WATER LINE | min. | mm |
| | | max. | mm |
| 3 d | MANIFOLD SETBACK | min. | mm |
| | | max. | mm |
| 3 e | DISTANCE MANIFOLD CENTRES | min. | mm |
| | | max. | mm |
| 4 g | SURGE FOR/AFT | min. | mm |
| | | max. | mm |
| 6 a | UNDERSIDE BASEPLATE ABOVE CHART DATUM | | mm |
| 6 b | JETTY FACE TO BERTHING LINE | min. | mm |
| | | max. | mm |
| 6 c | JETTY FACE TO RISER CENTRE | | mm |
| 6 d | RISER CENTRES | | mm |
| 6 g | FREE SPACE OBSTRUCTIONS FROM JETTY DECK | | mm |
| 6 h | RISER FLANGE ABOVE BASE PLATE TYPE 1 | | mm |
| 6 i | RISER FLANGE ABOVE BASE PLATE TYPE 2 | | mm |
| 10 a | MAX WATER LEVEL FROM CHART DATUM | | mm |
| 10 b | MIN WATER LEVEL FROM CHART DATUM | | mm |

Definitions as per O.C.I.M.F. specification 1999



If Hydraulic: Manual-Hydraulic Electric hydraulic

Main power supply (voltage) :

Area classification hydraulic power pack :

Gas group :

Temperature classification :

Ambient temperature °C (min/max) :

Number of electric pumps :

If Electric Hydraulic:

Separate control power supply : Yes No

Area classification loading arm :

Control panel on jetty or in control room :

Area classification control panel :

Main power supply (voltage) :

Quantity of arms to control : + extra for future:

Remote control:

Pendant on each triple assembly (3 mtr cable) Yes No

Control panel pendant (30 mtr cable) Yes No

HPP pendant (30 mtr cable) Yes No

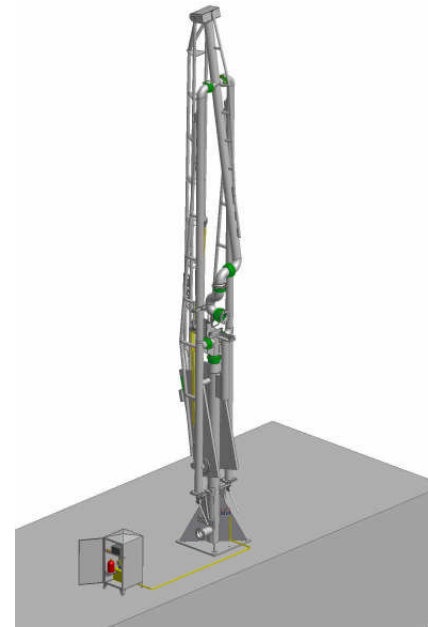
Wireless radio control unit Yes No

Alarm indicators:

Beacon (flashlight) Yes No

Horn Yes No

Any other special requirements:



Manual-hydraulic control system for one MLA



Electric hydraulic control system for more than one MLA

When completed, please return complete with your company details to: info@kanon.nl
or by fax +31 (0) 36 521 9770 for the attention of sales department