

**ARM DATA**

Quantity : .....

Arm Diameter (in inches) : .....

Arm lengths :

    Riser (A) : .....mm \*

    Inboard arm (B) : .....mm \*

    Outboard arm (C) : .....mm \*

Vapour return line :  Yes : diameter: .....  No

Vacuum breaker :  Yes  No

Purge connections :

    Riser :  Yes  No

    Apex :  Yes  No

    Triple assembly :  Yes  No

Piping material :  carbon steel  low temp. carbon steel  
 stainless steel 304L  stainless steel 316L

Ladders and platforms :  Yes  No

Support jack :  Yes  No

Quick Connect/Disconnect Coupler (QC/DC):  
 Yes  No

QC/DC operation :  Hydraulic  Manual

Emergency Release System (ERS):  Yes (\*)  No

**\* If arm lengths are not known, please fill out page 2 of 3**  
**(\*) if ERS should be included, electric hydraulic control system is mandatory**

**OPERATING CONDITIONS**

Product(s): .....

Viscosity : .....

Density : .....

Capacity: Loading: .....m<sup>3</sup>/hr  
Unloading: .....m<sup>3</sup>/hr

Temperature(°C): Operating: ..... design: ..... ambient: .....

Pressure (bar) Operating: ..... design: ..... test: .....

Flange type product :  ANSI B16.5  150#  300#  DIN.....

Flange type vapour :  ANSI B16.5  150#  300#  DIN.....

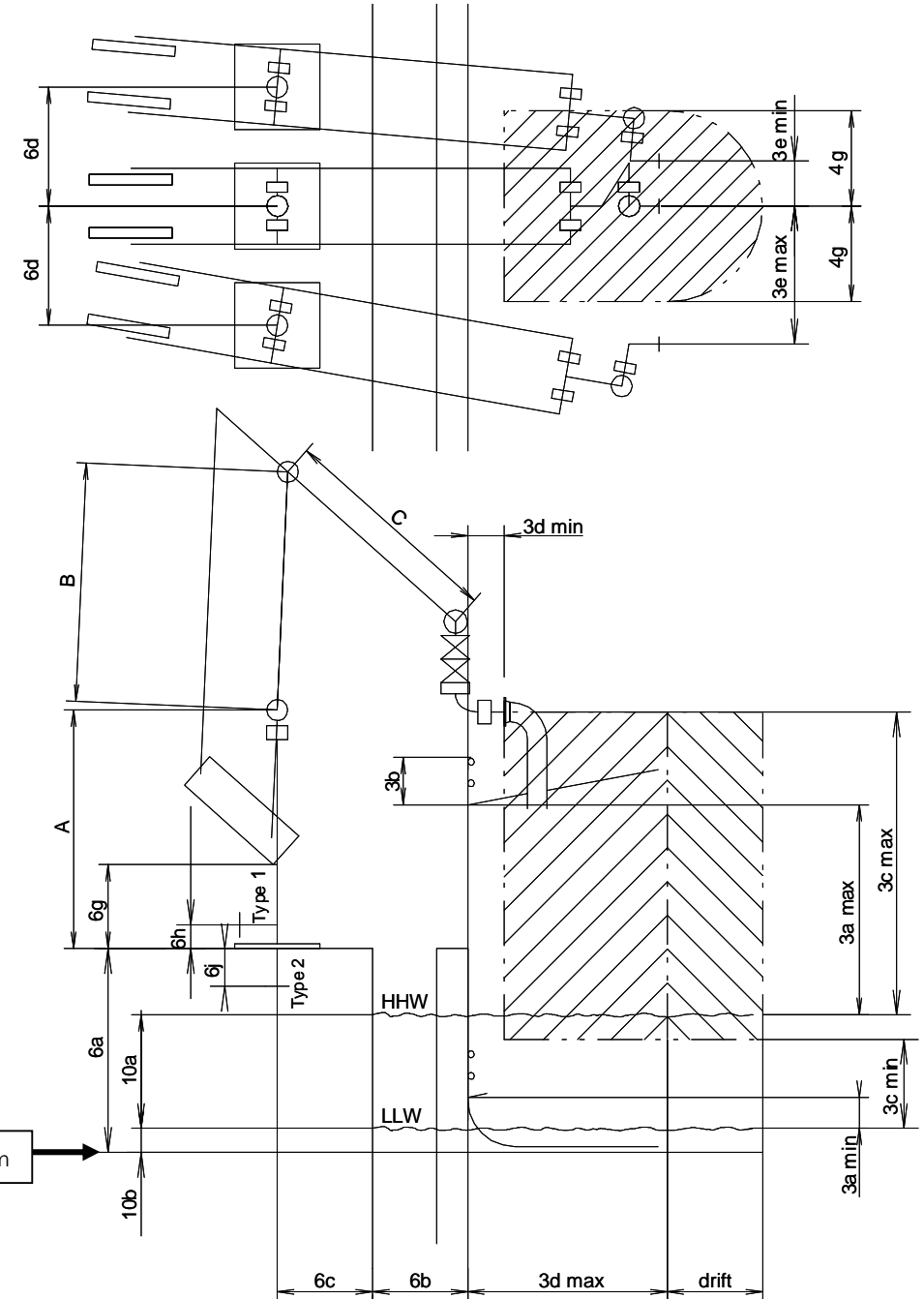
Max. wind velocity: .....

Operation:  Manual  Hydraulic: (please fill out page 3 of 3)

Any other special requirements: .....

CODE	DESCRIPTION	DIMENSION	
<b>3 a</b>	FREEBOARD ABOVE WATER LINE	min.	..... mm
		max.	..... mm
<b>3 b</b>	RAIL HEIGHT		..... mm
<b>3 c</b>	MANIFOLD ABOVE WATER LINE	min.	..... mm
		max.	..... mm
<b>3 d</b>	MANIFOLD SETBACK	min.	..... mm
		max.	..... mm
<b>3 e</b>	DISTANCE MANIFOLD CENTRES	min.	..... mm
		max.	..... mm
<b>4 g</b>	SURGE FOR/AFT	min.	..... mm
		max.	..... mm
<b>6 a</b>	UNDERSIDE BASEPLATE ABOVE CHART DATUM		..... mm
<b>6 b</b>	JETTY FACE TO BERTHING LINE	min.	..... mm
		max.	..... mm
<b>6 c</b>	JETTY FACE TO RISER CENTRE		..... mm
<b>6 d</b>	RISER CENTRES		..... mm
<b>6 g</b>	FREE SPACE OBSTRUCTIONS FROM JETTY DECK		..... mm
<b>6 h</b>	RISER FLANGE ABOVE BASE PLATE TYPE 1		..... mm
<b>6 i</b>	RISER FLANGE ABOVE BASE PLATE TYPE 2		..... mm
<b>10 a</b>	MAX WATER LEVEL FROM CHART DATUM		..... mm
<b>10 b</b>	MIN WATER LEVEL FROM CHART DATUM		..... mm

Definitions as per O.C.I.M.F. specification 1999



**If Hydraulic:**       Manual-Hydraulic     Electric hydraulic

Main power supply (voltage)                    :            .....

Area classification hydraulic power pack    :            .....

Gas group    :            .....

Temperature classification                     :            .....

Ambient temperature °C (min/max)         :            .....

Number of electric pumps                      :            .....

**If Electric Hydraulic:**

Separate control power supply                :             Yes     No

Area classification loading arm                :            .....

Control panel on jetty or in control room    :            .....

Area classification control panel             :            .....

Main power supply (voltage) :            .....

Quantity of arms to control :            .....+ extra for future: .....

Remote control:

Pendant on each triple assembly (3 mtr cable)     Yes     No

Control panel pendant (30 mtr cable)             Yes     No

HPP pendant (30 mtr cable)                       Yes     No

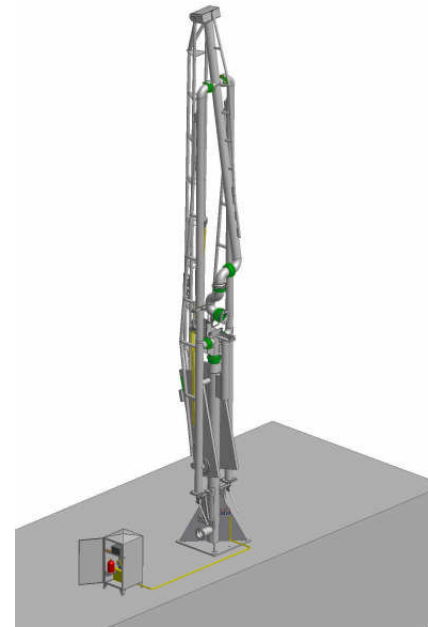
Wireless radio control unit                       Yes     No

Alarm indicators:

Beacon (flashlight)                                 Yes     No

Horn     Yes     No

Any other special requirements: .....



Manual-hydraulic control system for one MLA



Electric hydraulic control system for more than one MLA

When completed, please return complete with your company details to: [info@kanon.nl](mailto:info@kanon.nl)  
or by fax +31 (0) 36 521 9770 for the attention of sales department